



Georgia's  
**State Water Plan**

Joint Meetings

[www.georgiawaterplanning.org](http://www.georgiawaterplanning.org)

# Joint Meeting Objective

- The primary objective of the joint meetings is to provide Council members with a working knowledge of the resource assessments, both the process and the results.
- The working knowledge will facilitate understanding of the resource assessments and allow planning to move forward with Gap Analysis and Management Practices Selection.

# Tentative Meeting Schedule and Locations

<p><b>Coosa, Tallapoosa &amp; Tennessee River Basins Valley and Ridge, Blue Ridge, Piedmont Aquifers Monday, January 25, 2010 Location: Carrollton or Dawsonville</b></p>	<p><b>Chattahoochee River Basin Piedmont Aquifer Monday, February 1, 2010 Location: Columbus or Callaway Gardens</b></p>
<p><i>Councils that share these resources:</i></p>	<p><i>Councils that share these resources:</i></p>
<ul style="list-style-type: none"> <li>• Coosa-North Georgia WPC</li> </ul>	<ul style="list-style-type: none"> <li>• Coosa-North Georgia WPC</li> </ul>
<ul style="list-style-type: none"> <li>• MNGWPD</li> </ul>	<ul style="list-style-type: none"> <li>• Middle Chattahoochee WPC</li> </ul>
<ul style="list-style-type: none"> <li>• Savannah-Upper Ogeechee WPC</li> </ul>	<ul style="list-style-type: none"> <li>• MNGWPD</li> </ul>
<ul style="list-style-type: none"> <li>• Middle Chattahoochee WPC</li> </ul>	<ul style="list-style-type: none"> <li>• Upper Flint WPC</li> </ul>
	<ul style="list-style-type: none"> <li>• Lower Flint-Ochlockonee WPC</li> </ul>

# Tentative Meeting Schedule and Locations

<b>Altamaha, Ocmulgee &amp; Oconee River Basins</b> <b>Eastern Coastal Plain Cretaceous, Piedmont Aquifers</b> <b>Friday, January 22, 2010</b> <b>Location: Macon</b>	<b>Flint &amp; Ochlockonee River Basins</b> <b>Dougherty Plain, Claiborne Aquifers</b> <b>Friday, January 15, 2010</b> <b>Location: Americus</b>
<i>Councils that share these resources:</i>	<i>Councils that share these resources:</i>
• Altamaha WPC	• Lower Flint-Ochlockonee WPC
• Coastal Georgia WPC	• Middle Chattahoochee WPC
• Middle Ocmulgee WPC	• Middle Ocmulgee WPC
• MNGWPD	• MNGWPD
• Suwanee-Satilla WPC	• Upper Flint WPC
• Upper Flint WPC	
• Upper Oconee WPC	
• Counties of Savannah-Upper Ogeechee and Coastal WPC in the Cretaceous Aquifer	

# Tentative Meeting Schedule and Locations

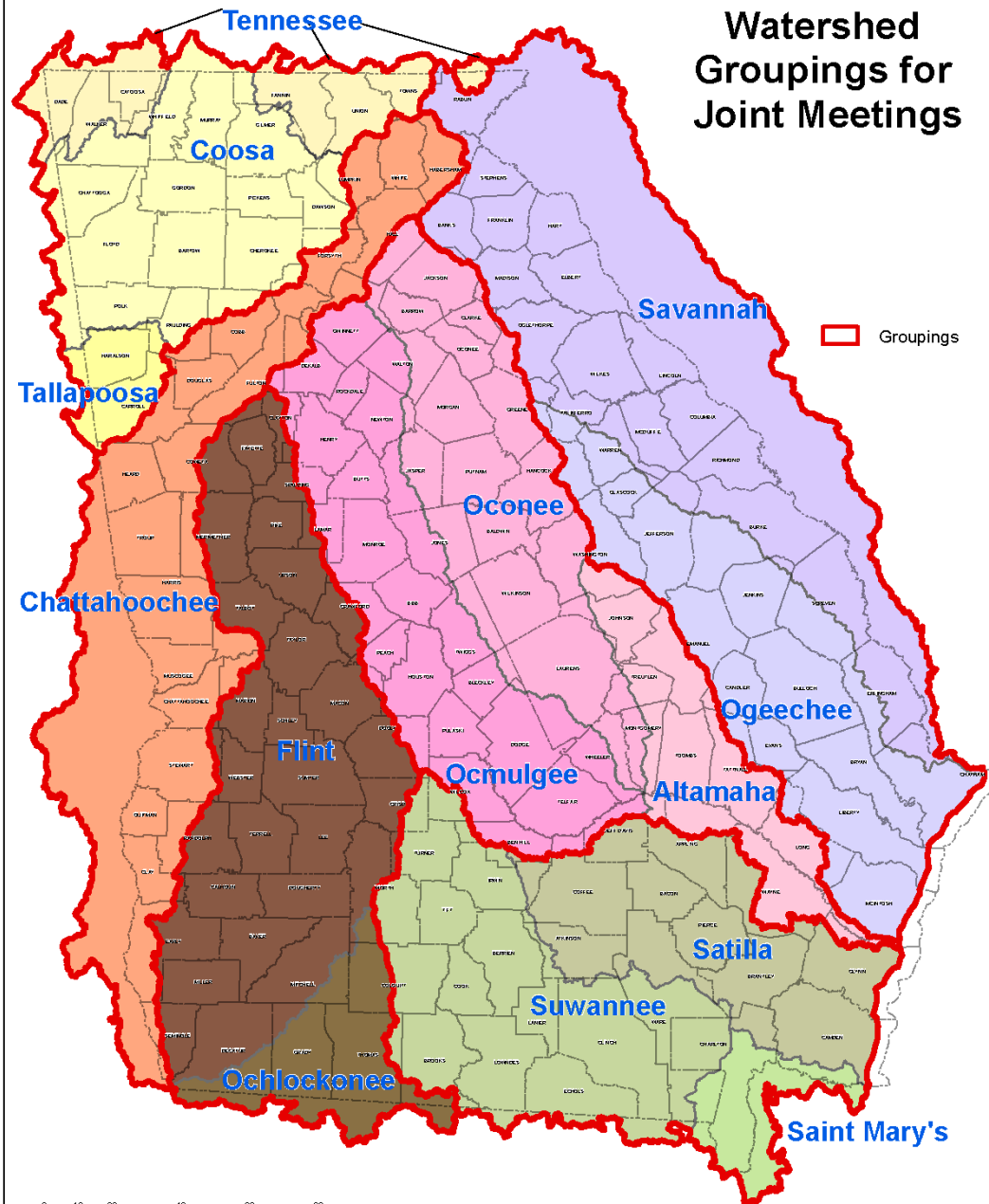
<p><b>Satilla, Suwanee &amp; St. Mary's River Basins</b>  <b>South Central Georgia Floridan Aquifer</b>  <b>Thursday, January 28, 2010</b>  <b>Location: Waycross</b></p>	<p><b>Savannah &amp; Ogeechee River Basins</b>  <b>Brunswick Harbor Aquifer Model, Savannah</b>  <b>CSSI Model, Eastern Coastal Plain Upper</b>  <b>Floridan Aquifer</b>  <b>Tuesday, January 19, 2010</b>  <b>Location: Augusta</b></p>
<p><i>Councils that share these resources:</i></p> <ul style="list-style-type: none"> <li>• Altamaha WPC</li> <li>• Lower Flint-Ochlockonee WPC</li> <li>• Coastal Georgia WPC</li> <li>• Suwannee-Satilla WPC</li> <li>• Southern Counties of the Upper Flint WPC in the Tift Co Floridan Aquifer</li> </ul>	<p><i>Councils that share these resources:</i></p> <ul style="list-style-type: none"> <li>• Altamaha WPC</li> <li>• Coastal Georgia WPC</li> <li>• Savannah-Upper Ogeechee WPC</li> <li>• Upper Oconee WPC</li> <li>• Eastern Counties of Suwannee Satilla WPC in the Eastern Coastal Plain Upper Floridan</li> </ul>

# Draft Agenda

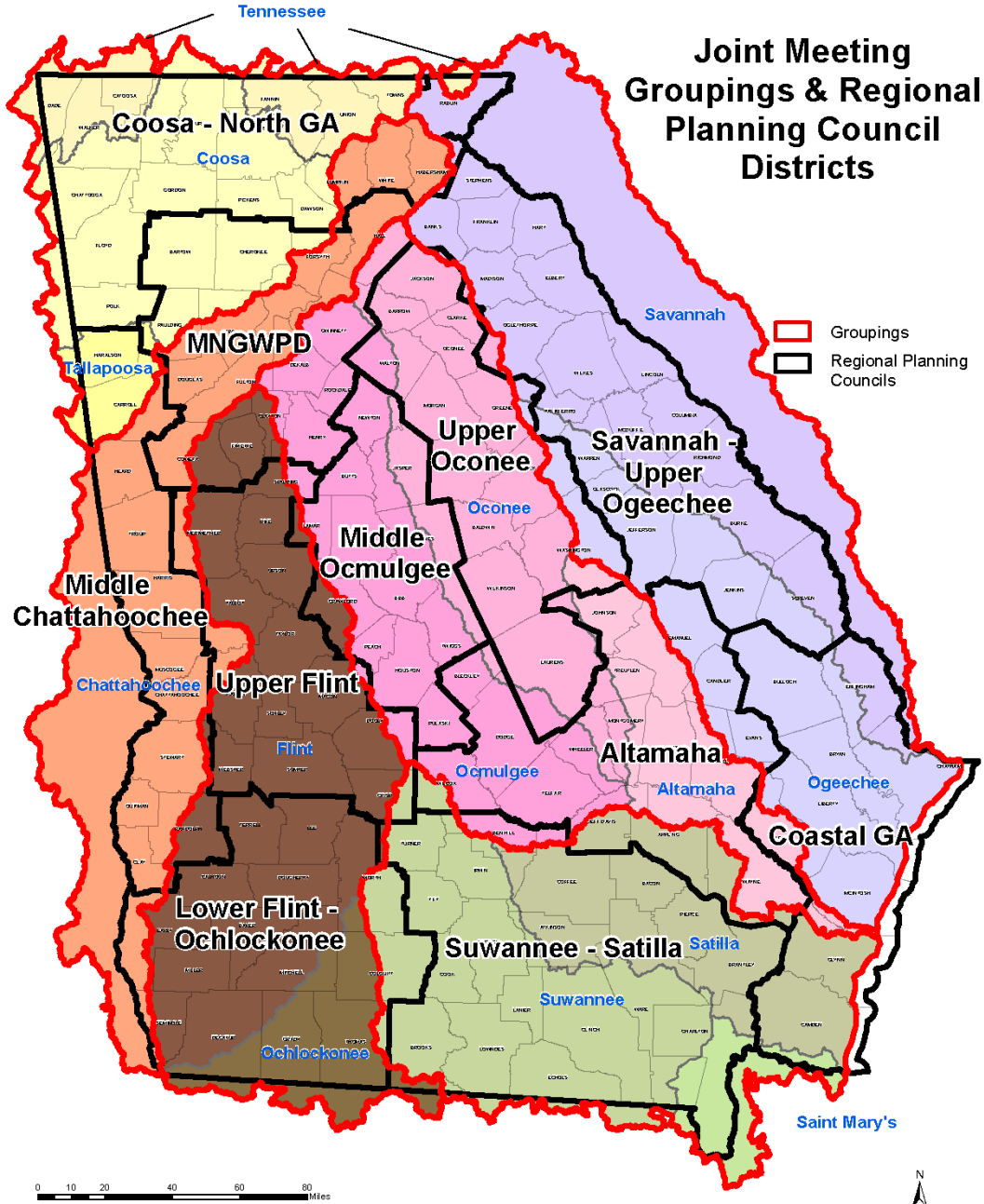
## Resource Assessment Joint Meeting Agenda

- Welcome and Charge to Meeting Participants (15-30 minutes)
- Resource Assessment Presentation and Discussion: Ground Water (~90 minutes ), Surface Water Quantity (~90 minutes) and Surface Water Quality (~100 minutes)
  - Overview of Methodology and Assumptions
  - Results Specific to the Basin; Crosses planning council boundaries
- Future steps and wrap up (20-45 minutes)
- Technical Discussions Open House (stations for each resource assessment) (60-120 minutes)

# Watershed Groupings for Joint Meetings

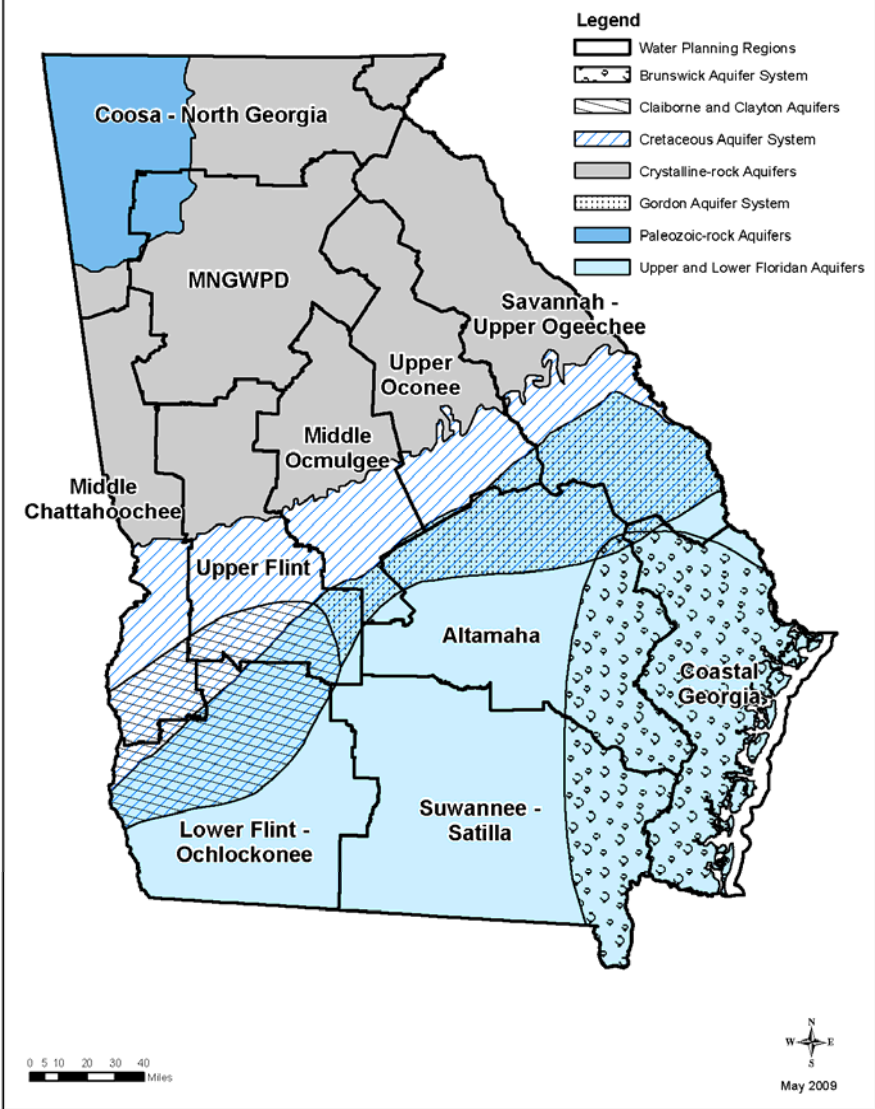


# Joint Meeting Groupings & Regional Planning Council Districts





## Water Planning Regions With Aquifers



# Middle Chattahoochee Council Meetings

## Joint Meetings for MCWPC

- Flint & Ocklockonee River Basins; Dougherty Plain and Claiborne Aquifers - January 15, 2010 at Americus
- Coosa, Tallapoosa & Tennessee River Basins; Valley and Ridge, Blue Ridge and Piedmont Aquifers – January 25, 2010 at Carrollton or Dawsonville
- Chattahoochee River Basin; Piedmont Aquifer – February 1, 2010 at Columbus or Callaway Gardens
- Subcommittee of MCWPC to form “core” group to attend joint meetings and coordinate with other council members to assure adequate representation
- Sign-in sheet for council members that plan to attend any of the joint meetings