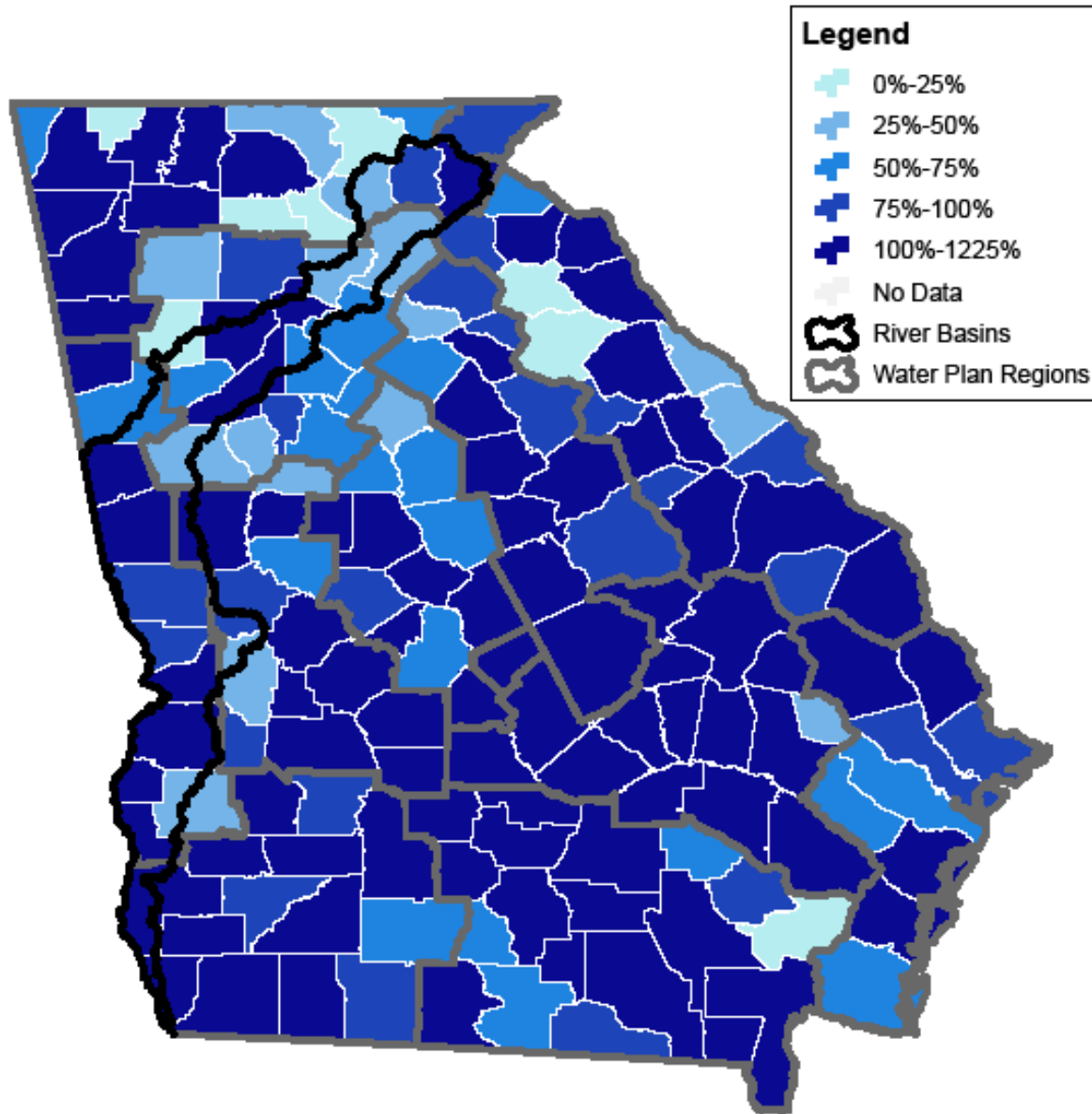


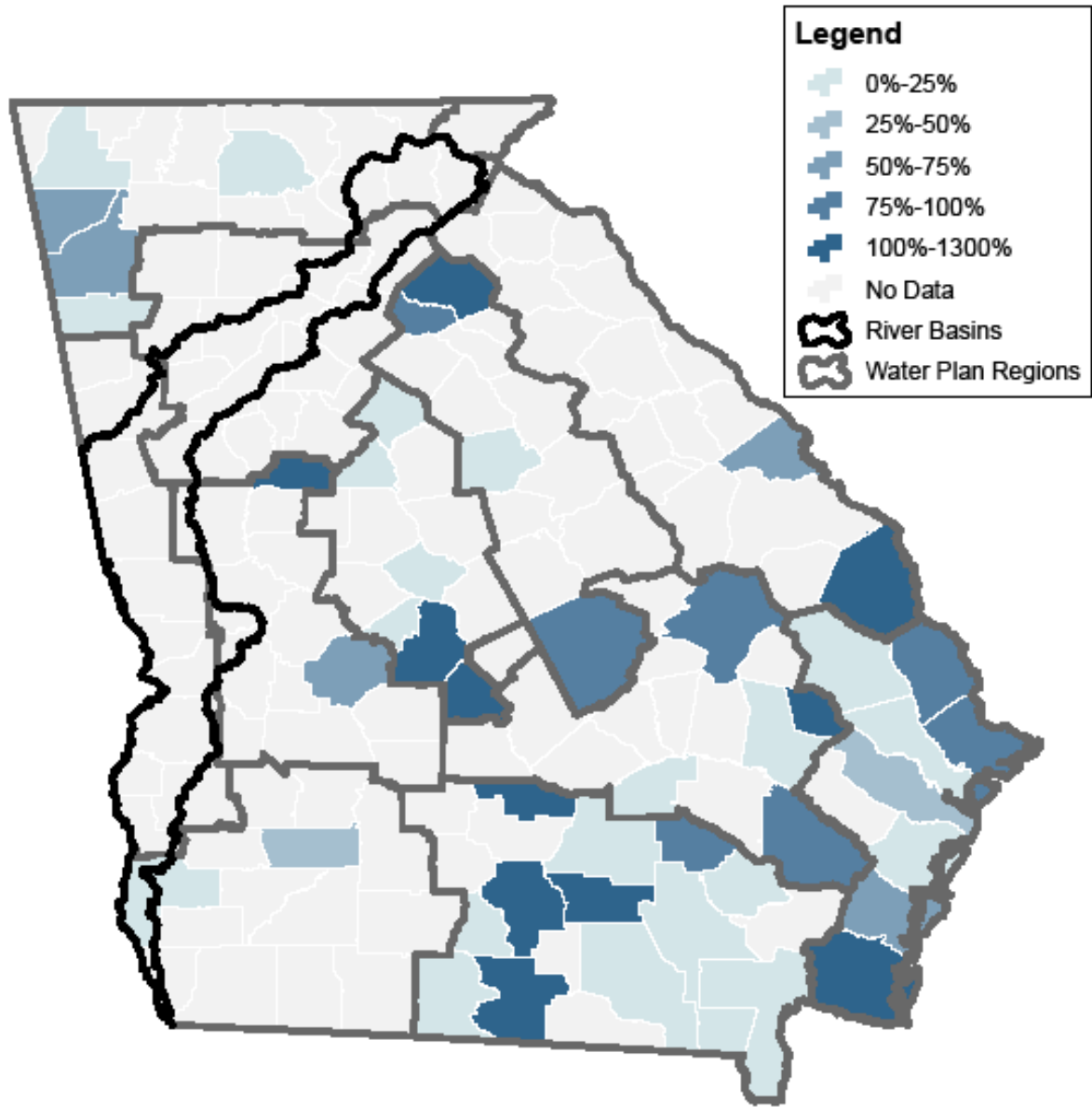


# Initial Future Assimilative Capacity in the Chattahoochee River Basin

# Current Permitted Municipal Infrastructure Compared to 2050 Demand in the Chattahoochee Watershed



# Current Permitted Industrial Infrastructure Compared to 2050 Demand in the Chattahoochee Watershed



# Permits Modeled in the Chattahoochee River Basin

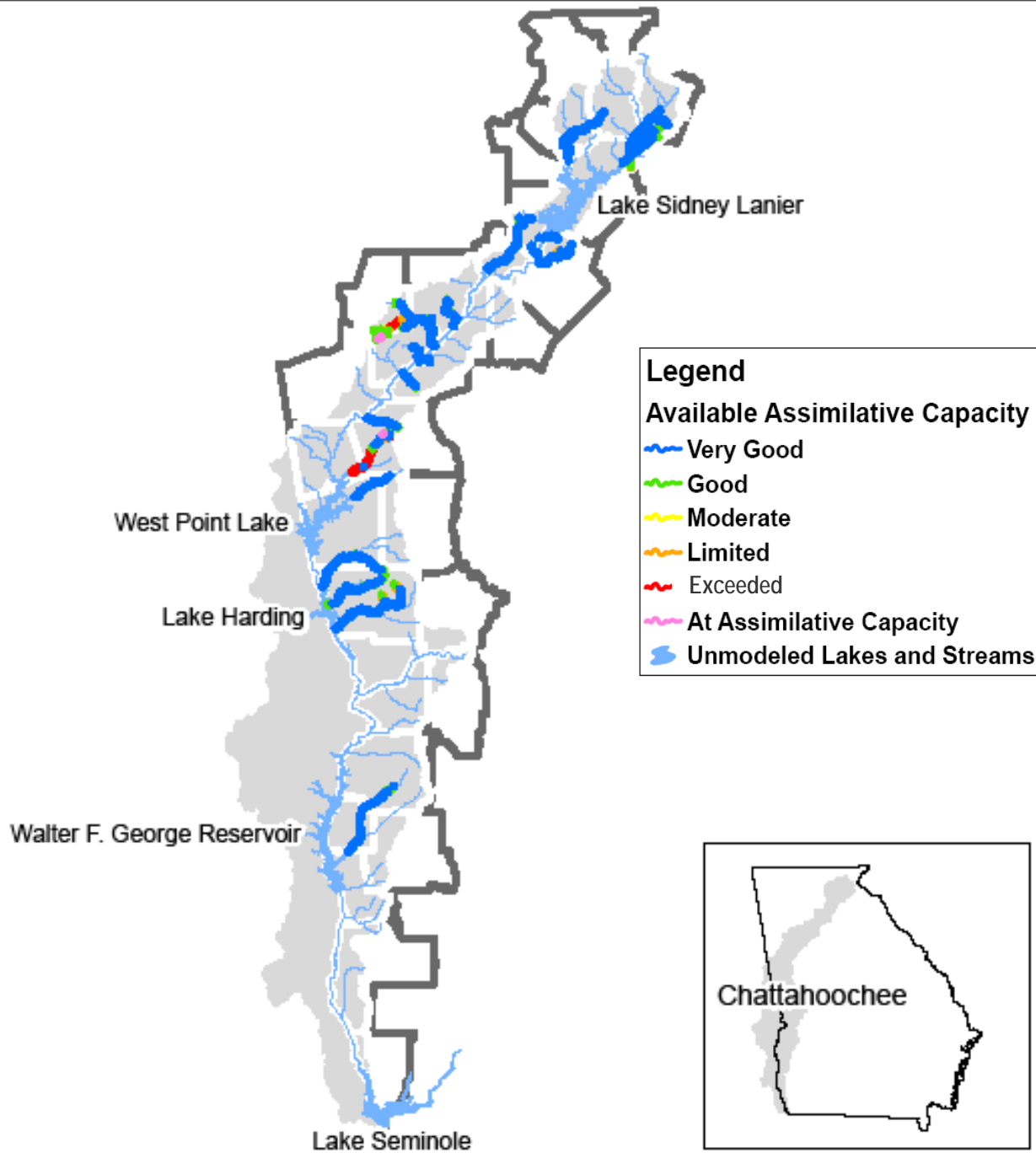
Name	Permit	County	Receiving Water	Permitted					Notes	Discharge Type
				Flow (MGD)	BOD5 (mg/L)	Ammonia (mg/L)	Dissolved Oxygen (mg/L)	Total Phosphorus (mg/L)		
Coweta County - Amall WPCP	GA0000299	Coweta	Wahoo Creek	0.06	30	17.4	5	-----		Municipal
Coweta County - Arnco WPCP	GA0000311	Coweta	Wahoo Creek	0.1	30	17.4	5	-----		Municipal
Bonnell Manufacturing Company	GA0000507	Coweta	Mineral Springs Branch Tributary	0.09	-----	-----	-----	-----	Using background WQ in model. From 2005 only	
Industrial Speciality Fabrics (Westek Inc.)	GA0000833	Troup	Yellowjacket Creek	0	-----	-----	-----	-----	only discharge air washer overflow & storm runoff	Industrial
Tyson Foods Inc.	GA0001074	Forsyth	Orr Creek to Kelly Mill Branch	1.5	132 (lbs/day)	2	6	0.75	1.5 mgd used in WLA, 2.0 mgd in EPA application	Industrial
USAF Lockheed (Plant No. 6)	GA0001198	Cobb	Nickajack Creek	1.5	10	2.3	6	0.75		Municipal/Industrial
Cagle Inc. - Pine Mountain Valley	GA0001317	Harris	Fort Creek to Mulberry Creek	0.646	27.2	4	5	Report	UOD=318 lbs/d (Aug-Sept), flow used 0.646 mgd (1 cfs) as in WLA	Industrial
Lumpkin WPCP	GA0021032	Stewart	Hodchodkee Creek	0.425	30	14	5	1		Municipal
Newnan - Mineral Springs WPCP	GA0021423	Coweta	Mineral Springs Creek	0.75	30	9.2	5	10.68 (kg/day)	Combined limit w Newnan Wahoo Creek WPCP	Municipal
City of Cornelia	GA0021504	Habersham	Mud Creek	3	25	1.5	6	1.1		Municipal
Callaway Gardens	GA0022527	Harris	Mountain Creek	0.5	30	-----	-----	-----	For DOSAG modeling: NH3 assumed to be 17.4 mg/L, DO assumed to be 2 mg/L	Municipal
Buford - Southside WPCP	GA0023167	Gwinnett	Suwanee Creek Tributary	2	18	5	5	0.75		Municipal
Buford - Westside WPCP	GA0023175	Gwinnett	Richland Creek	0.25	30	10	4	-----		Municipal
Lula Pond WPCP	GA0024767	Hall	Lula Branch Trib to Hagen Creek	0.082	30	-----	-----	10.4 (kg/mo)	Not modeled in future resource assessment because plant will be replaced by new Lula Pond discharge to Hagan Creek	Municipal
Pine Mountain WPCP	GA0025691	Harris	Turkey Creek to Flat Shoal Cr	0.3	20	5	5	-----	Seasonal Limit	Municipal
Dahlonega WPCP	GA0026077	Lumpkin	Yahoola Creek	1.44	30	8	2	0.13		Municipal
Villa Rica - Sweetwater WPCP	GA0027171	Douglas	Town Branch	0.52	20	5	5	0.75		Municipal
Douglasville - North WPCP	GA0030350	Douglas	Gothards Creek	2	5	1	6	0.13		Municipal
Newnan - Wahoo Creek WPCP	GA0031721	Coweta	Wahoo Creek	3	18	1.1	2	10.68 (kg/day)	Seasonal Limit Combined limit w Newnan Mineral Spring WPCP	Municipal
Demorest WPCP	GA0032506	Habersham	Hazel Creek	0.4	30	-----	6	36.29 (kg/mo)	NH3 assumed to be 17.4 mg/L	Municipal
Clarksville WPCP	GA0032514	Habersham	Soquee River	0.75	30	17.4	2	95.94 (kg/mo)		Municipal
City of Baldwin	GA0033243	Habersham	Little Mud Creek	0.8	20	2.2	6	1.0	Two seasonal discharge limits	Municipal
Hamilton WPCP	GA0033618	Harris	Palmetto Creek to Mulberry Cr	0.1	30	-----	-----	-----	For DOSAG modeling: NH3 assumed to be 17.4 mg/L, DO assumed to be 2 mg/L	Municipal
Habersham High School	GA0033952	Habersham	Lick Log Creek	0.018	30	-----	-----	168 (kg/year)	For DOSAG modeling: NH3 assumed to be 17.4 mg/L, DO assumed to be 2 mg/L	Municipal
Cleveland WPCP	GA0036820	White	Tesnatee Creek	0.75	20	10	2	159 (kg/mo)		Municipal

# Permits Modeled in the Chattahoochee River Basin

Name	Permit	County	Receiving Water	Permitted					Notes	Discharge Type
				Flow (MGD)	BOD5 (mg/L)	Ammonia (mg/L)	Dissolved Oxygen (mg/L)	Total Phosphorus (mg/L)		
Forsyth County - Dick Creek WRF	GA0038563	Forsyth	Dick Creek	0.95	5	1	5	0.13	Cold weather discharge	Municipal
Forsyth Co Fowler Reuse	GA0038695	Forsyth	Big Creek	3.13	5	1	5	0.13	Cold weather discharge	Municipal
Paulding County Coppermine WPCP	GA0038865	Paulding	Mill Cr to Lick Log Cr	4	2	0.5	6	0.13	Permit issued 5/29/2007 (B1, B2, B3)	Municipal
Paulding County Public Works WRF	GA0038890	Paulding	Upper Sweetwater Cr	1	5	1.5	5	0.13	Cold weather discharge. Permit issued 7/2008.	Municipal
Lula Pond WPCP	GA0039039	Hall	Hagen Creek	0.375	30	2	5	10.4 (kg/mo)	It will replace GA0024767	Municipal
Windermere Reuse Facility	GA0039128	Forsyth	James Creek	0.69	5	-----	5	0.13	Cold weather discharge	Municipal
City of Cumming	GA0046019	Forsyth	Big Creek	8	4	1	6	0.13		Municipal
Fulton County - Little Bear Creek	GA0047104	Fulton	Little Bear Creek	0.1	20	5	5			Municipal
Atlanta - R.M. Clayton WPCP	GA0021482	Fulton	Chattahoochee River	100	15	3.7	5	0.64	Chattahoochee River GA-RIV-1 Model	Municipal
Atlanta - Utoy Creek WPCP	GA0021458	Fulton	Chattahoochee River	40	15	3.7	5	0.64	Chattahoochee River GA-RIV-1 Model	Municipal
Atlanta - South River WPCP	GA0024040	Fulton	Chattahoochee River	48	15	4.4	5	0.64	Chattahoochee River GA-RIV-1 Model	Municipal
Fulton County - Big Creek WPCP	GA0024333	Fulton	Chattahoochee River	38	2.9	0.5	6	0.3	Chattahoochee River GA-RIV-1 Model	Municipal
Fulton County - Camp Creek WPCP	GA0025381	Fulton	Chattahoochee River	24	2.9	0.5	7	0.3	Chattahoochee River GA-RIV-1 Model	Municipal
Fulton County - Johns Creek WPCP	GA0038831	Fulton	Chattahoochee River	20	2.9	0.5	6	0.22	Chattahoochee River GA-RIV-1 Model	Municipal
Douglas County - Sweetwater Creek WPCP	GA0047201	Douglas	Chattahoochee River	6	2.9	0.5	6	0.3	Chattahoochee River GA-RIV-1 Model	Municipal
Douglas County - South Central WPCP	GA0038709	Douglas	Chattahoochee River	6	2.9	0.5	6	0.3	Chattahoochee River GA-RIV-1 Model	Municipal
Cobb County - R.L. Sutton WPCP	GA0026140	Cobb	Chattahoochee River	60	2.9	0.5	6	0.3	Chattahoochee River GA-RIV-1 Model	Municipal
Cobb County - South WPCP	GA0026158	Cobb	Chattahoochee River	40	13	1.8	7	0.75	Chattahoochee River GA-RIV-1 Model	Municipal
Gwinnett County - Crooked Creek WPCP	GA0026433	Gwinnett	Chattahoochee River	45	2.9	0.5	6	0.3	Chattahoochee River GA-RIV-1 Model	Municipal
Fulton County - Cauley Creek WPCP	GA0038440	Fulton	Chattahoochee River	5	2.9	0.5	7	0.13	Chattahoochee River GA-RIV-1 Model	Municipal

# Available Assimilative Capacity in the Chattahoochee River Basin

Model Run	Basin	Available Assimilative Capacity (Total Mileage)				
		Very Good	Good	Moderate	Limited	None or Exceeded
Baseline	Chattahoochee	313	59	16	15	0.1
Permitted	Chattahoochee	335	31	3.2	13	21

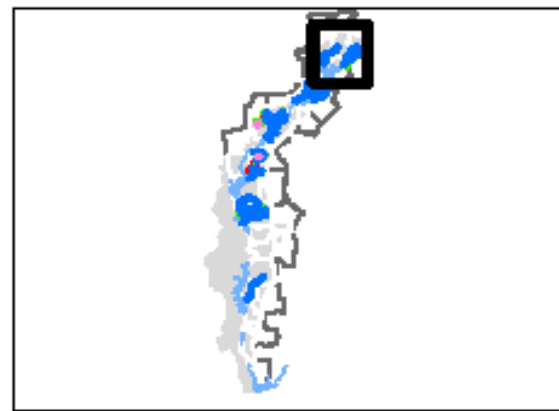
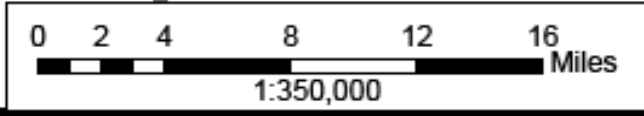


### Legend

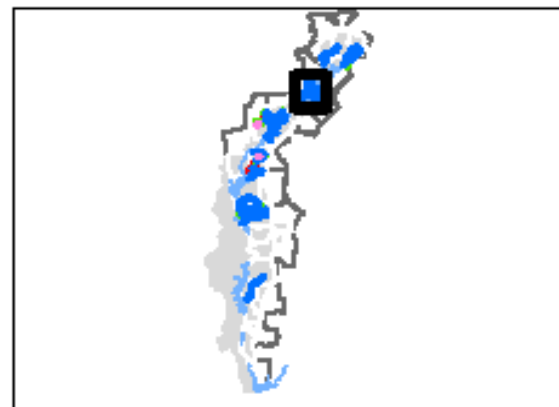
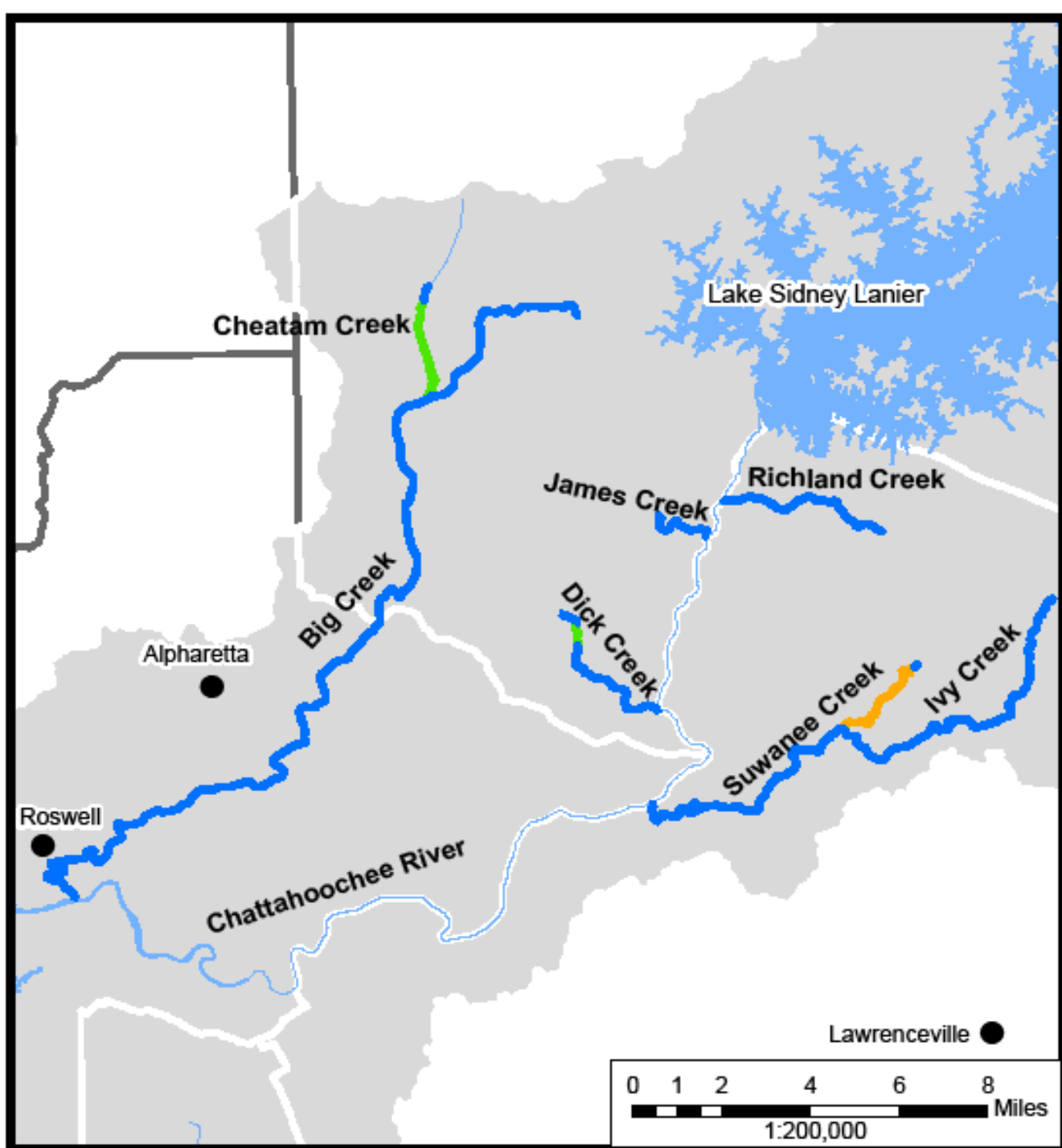
#### Available Assimilative Capacity

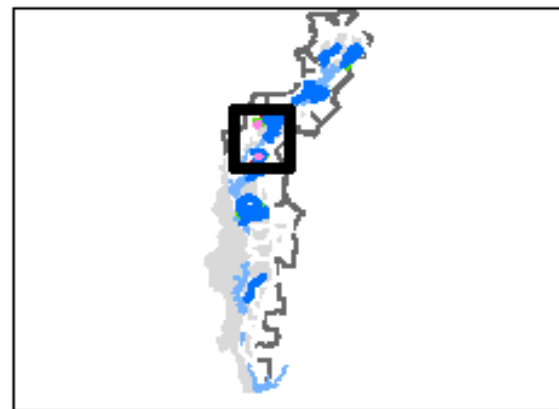
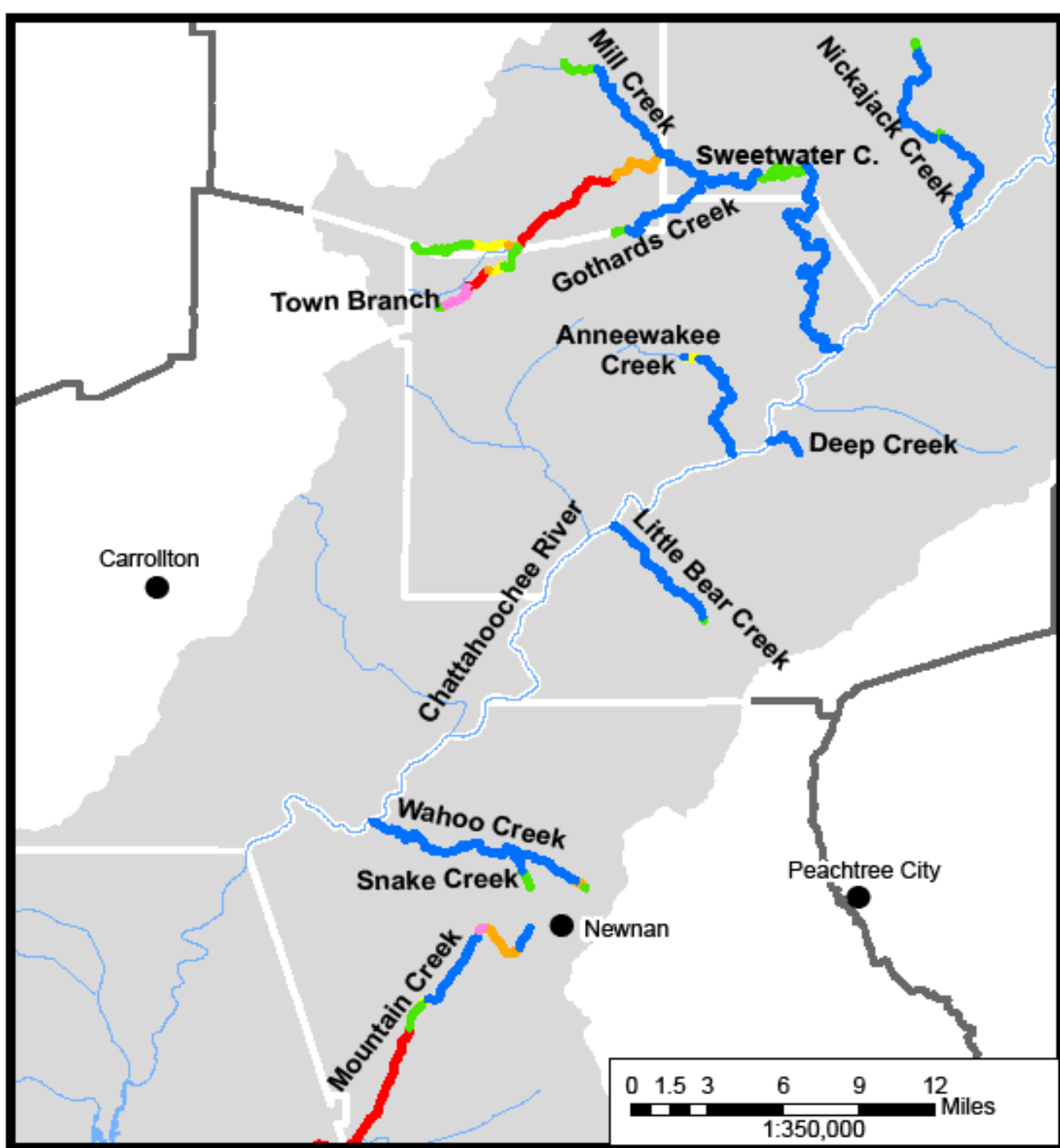
- Very Good
- Good
- Moderate
- Limited
- Exceeded
- At Assimilative Capacity
- Unmodeled Lakes and Streams

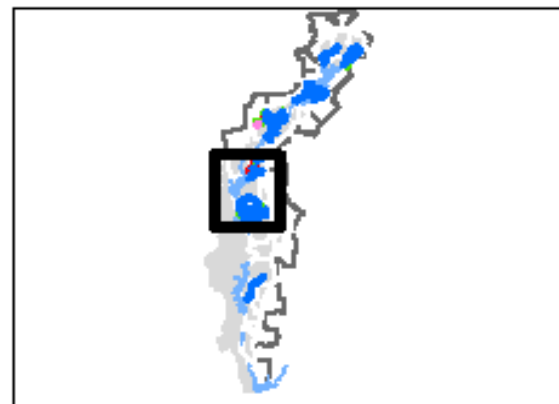
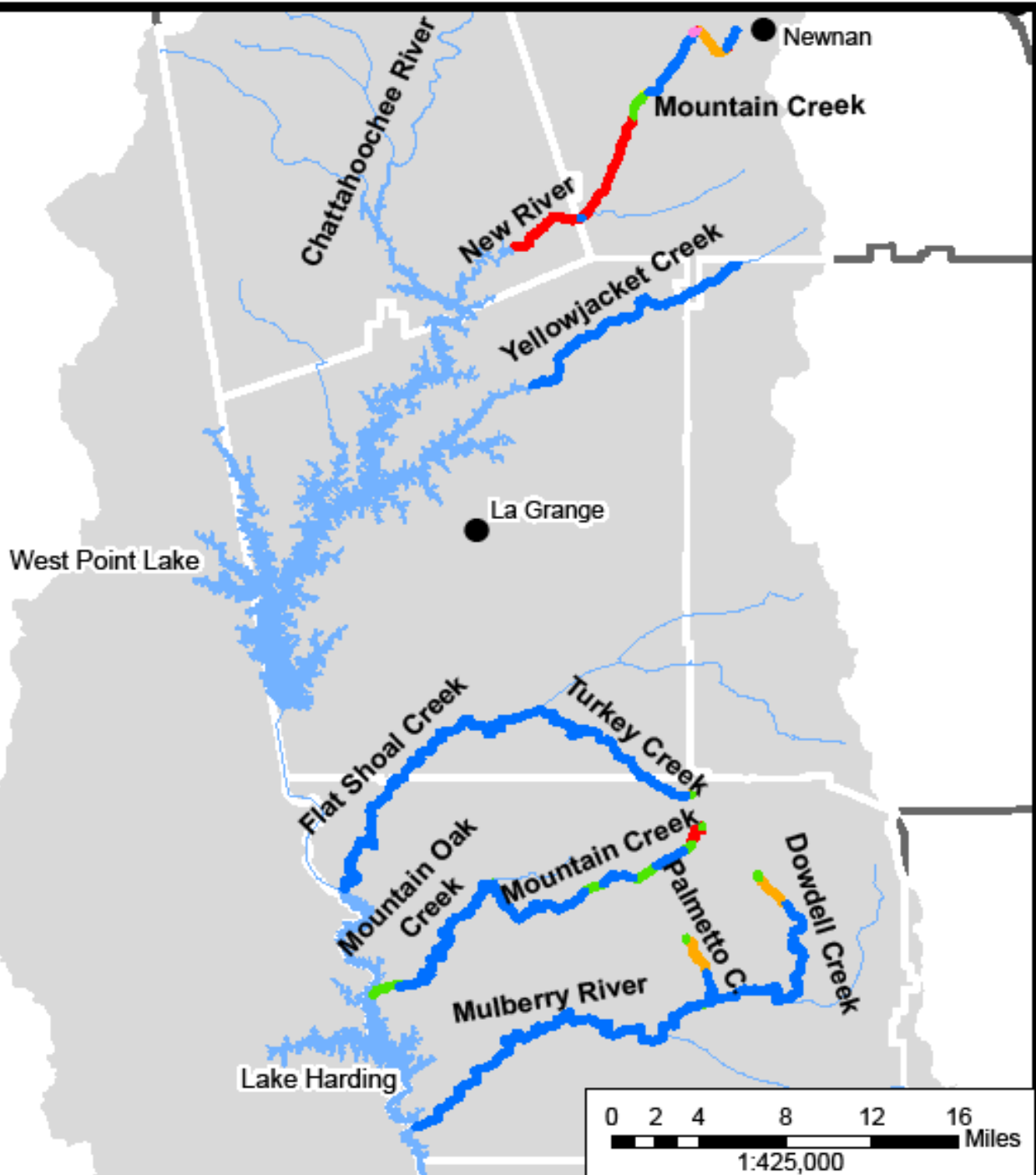
Yahoola Creek  
Chestatee River  
Dahlonega  
Chattahoochee River  
Hazel Creek  
Mud Creek  
Little Mud Creek  
Hager Creek  
Gainesville  
Lake Sidney Lanier











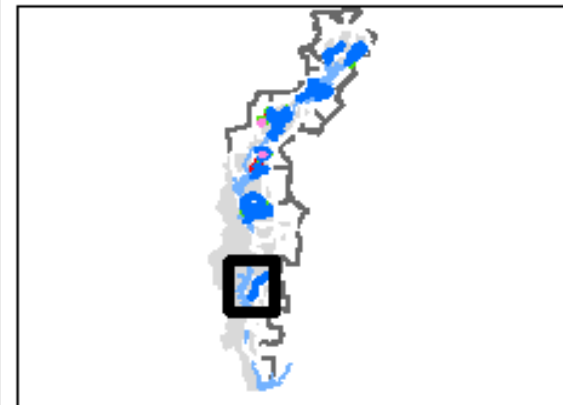
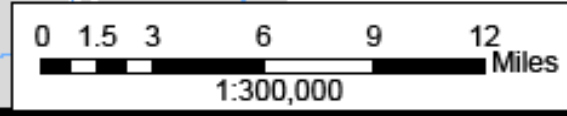
Walter F. George Reservoir

Hodchodkee Creek

### Legend

#### Available Assimilative Capacity

- Very Good
- Good
- Moderate
- Limited
- Exceeded
- At Assimilative Capacity
- Unmodeled Lakes and Streams





Questions?